

AETES

220VDC-DC Converter 800W

Power Boost of 150% for 30s
Wide Temperature Range
Three Year Warranty

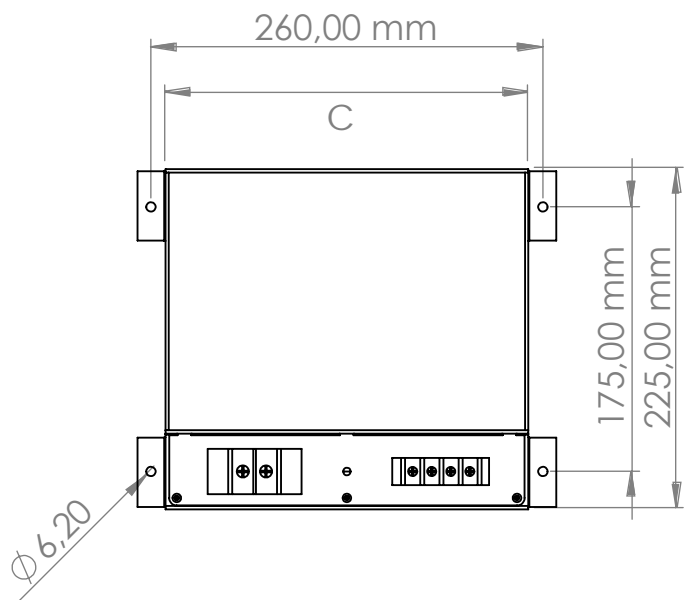
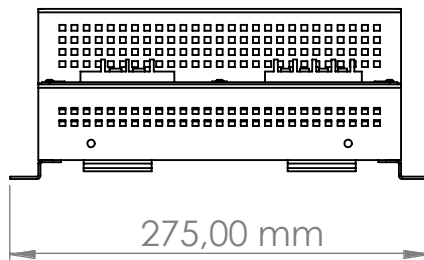
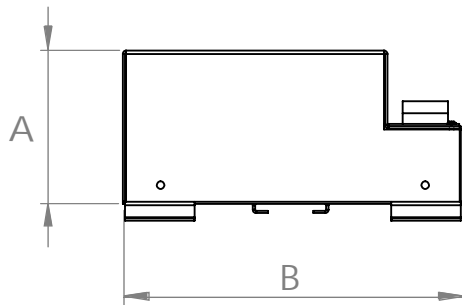
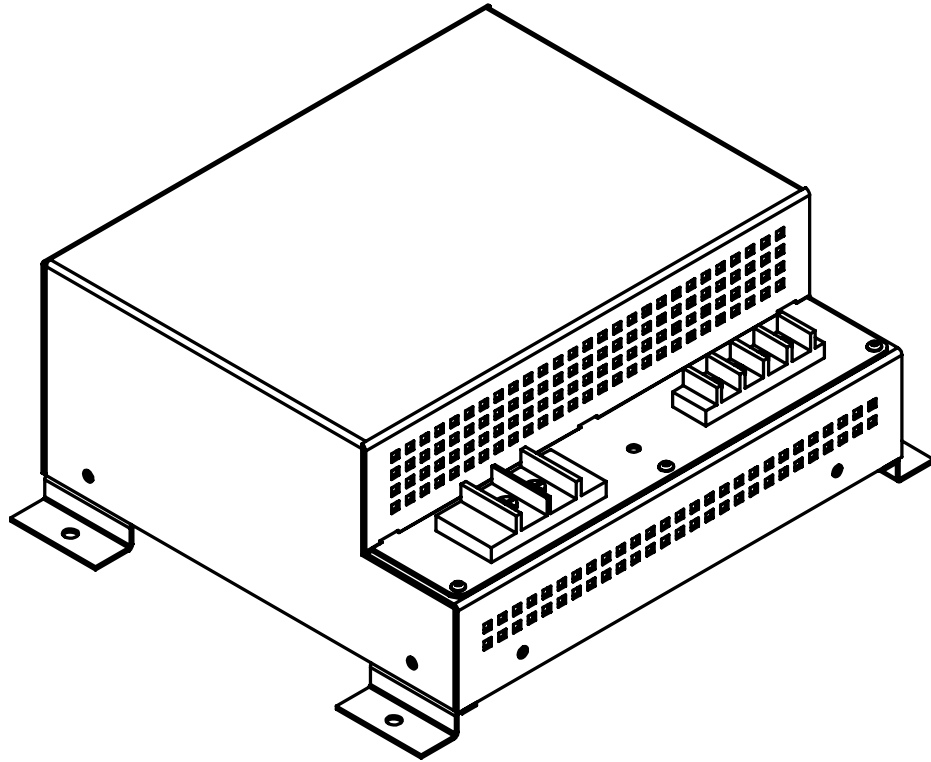


"...power alliance..."

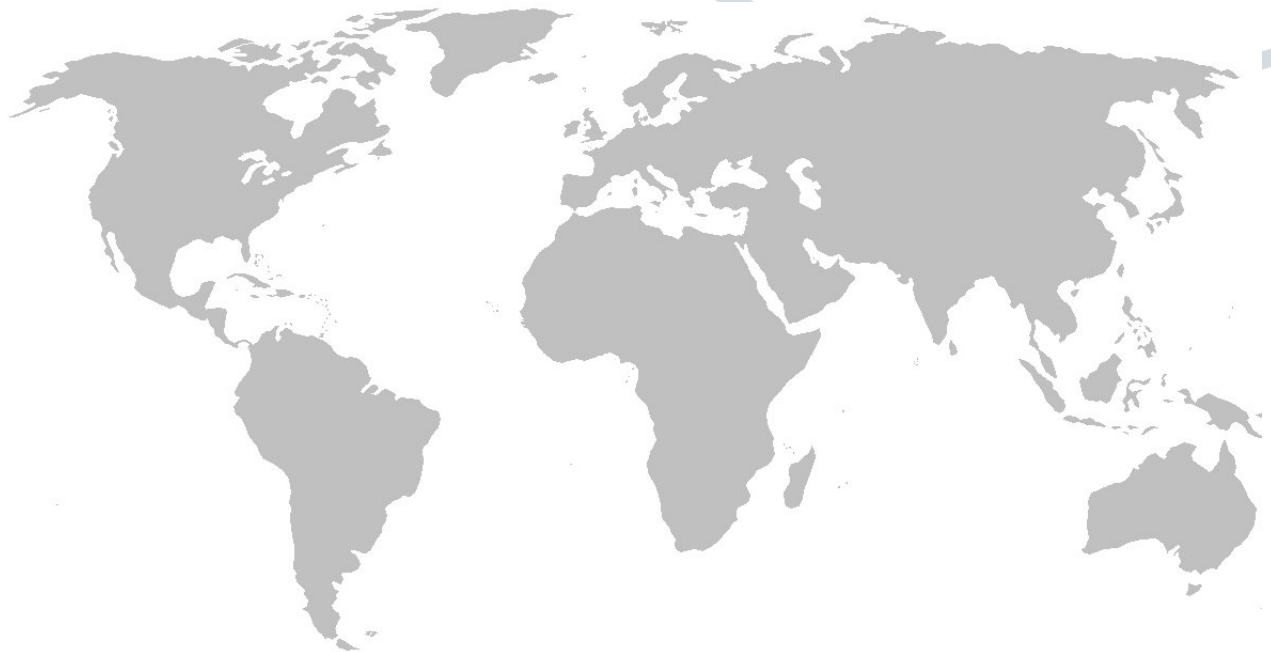
Specification

| ITEMS | MODEL | CRW-220-072-800 | CRW-220-110-800 | CRW-220-2D3-800 |
|----------------------------------|-------|---|-----------------|----------------------------|
| Input Voltage Range | | 220VDC (160V...360V DC) | | |
| Max. Input Current (220 VDC) | | 4A (Starting Inrush; 50-80A) | | |
| Output Voltage | | 72VDC | 110VDC | 24VDC + 36VDC Dual Out |
| Max. Output Current (DC) | | 12A (800 Watt) | 8A (800 Watt) | 16A + 12A (Total 800 Watt) |
| Output Power Reserve | | 150% load for 30 seconds at <45°C | | |
| Output Over Current Protection | | 105% -150% | | |
| Output Over Voltage Protection | | 110% -120% | | |
| Over Temperature Protection | | Yes | | |
| Short-Circuit Protection | | Continuous | | |
| Efficiency (Full Load) (220VDC) | | >94% | | |
| Load Regulation (max.) | | 1 % | | |
| Line Regulation (max.) | | 0.5 % | | |
| Ripple Noise (max.) | | 400mV | | |
| Mounting Kit | | DIN Rail + Ears Brackets | | |
| Remote On/ Off | | Yes | | |
| Power Good /Alarm Contact | | Dry Contact (NO/ NC) | | |
| Status Indicator LED | | White: OFF Blue: Ready Green: ON Red: Fault | | |
| Enclosure Material/ Color | | Aluminum / Anthracite Grey (RAL7016 Texture) | | |
| Cooling | | Free Air Convection | | |
| Operating Temperature | | -20°C to +70°C (Derating linearly to 50% load above +45°C) (Optionally; - 40°C to +70°C) | | |
| Storage Temperature | | - 40°C to +85°C | | |
| Humidity (Non Condensing) | | 20-90% RH operating, 10-95% RH non operating | | |
| Withstand Voltage (One Minute) | | Input to Ground 2000VAC, Input to Output 4000VAC, Output to Ground 1500VAC | | |
| Isolation Resistance | | >100MΩ at 25°C & 95%RH, Output to Ground 500VDC | | |
| MTBF | | >200,000 h (MIL-HDBK-217F at 25°C) | | |
| Immunity Compatibility | | EN61000-4 / - 2 -3 -4 -5 -6 | | |
| Safety Compatibility | | EN60601-1, EN62368-1 | | |
| EMI Compatibility | | EN55032 Class B | | |
| Weight (Typ) | | 3,5 kg | | |
| Dimensions | | A:100 B: 225 C: 240 mm | | |
| Warranty | | 3-YEAR | | |

Drawing



"...power alliance..."



AETES
"...power alliance..."

The specifications, drawings and images indicated in this document are based on current information. All content is subject to modifications or additions. For more information on our local sales offices, visit us at our website below.