

AETES

Rectifier Charger 3PH-125-E

*Internal Isolation Transformer
Industrial-Grade Enclosure
Advanced User Panel*



"...power alliance..."

DESCRIPTION

AETES XTM 3PH Series Industrial Rectifier Charger is a high technology equipment, including all protection and control systems, which is designed and manufactured to convert 3 Phase AC voltage to pure and regulated 125V DC voltage. It provides DC power, which is especially important for industrial and defence applications. When this system is used with a battery group at its output, this equipment charges batteries and acts as a Uninterruptible DC Power Source.

This equipment contains an input isolation transformer and provides full electrical isolation between input supply and 125 Volt DC output.

This uses all advantages of Digital Signal Processor control. It provides advanced multilingual user interface and advanced communication features. When used as battery charger, it can perform battery charge in 3 different modes: Float Charge, Equalizing Charge, Boost Charge.

FEATURES

- Internal Isolation Transformer at Input
- Full Digital Controlled Conventional Rectifier
- Soft Start, Smart control and high reliability with Digital Signal Processor
- Float charge, equalizing charge and boost charge modes
- Automatic and manual charge modes
- Low output voltage ripple and high reliability
- User panel with LCD display, showing measurements, status and alarm messages
- Audible alarm and Led displays for easy observation of Rectifier status
- Programmable current limitation
- User language selection from front panel (DE, EN, ES, NL, PT, TR)
- Calibration of measurements from front panel
- DC Low, DC High, Line Failure, Over Temperature, Short Circuit protections
- Ability to program all operation parameters (Password Protected)
- Programmable alarm relay contact outputs (4 standard, up to 16 relays as option)
- Low Voltage Disconnect (LVD) Protection
- Modbus RTU RS232 Communication
- Log records with date and time stamp up the 200 events

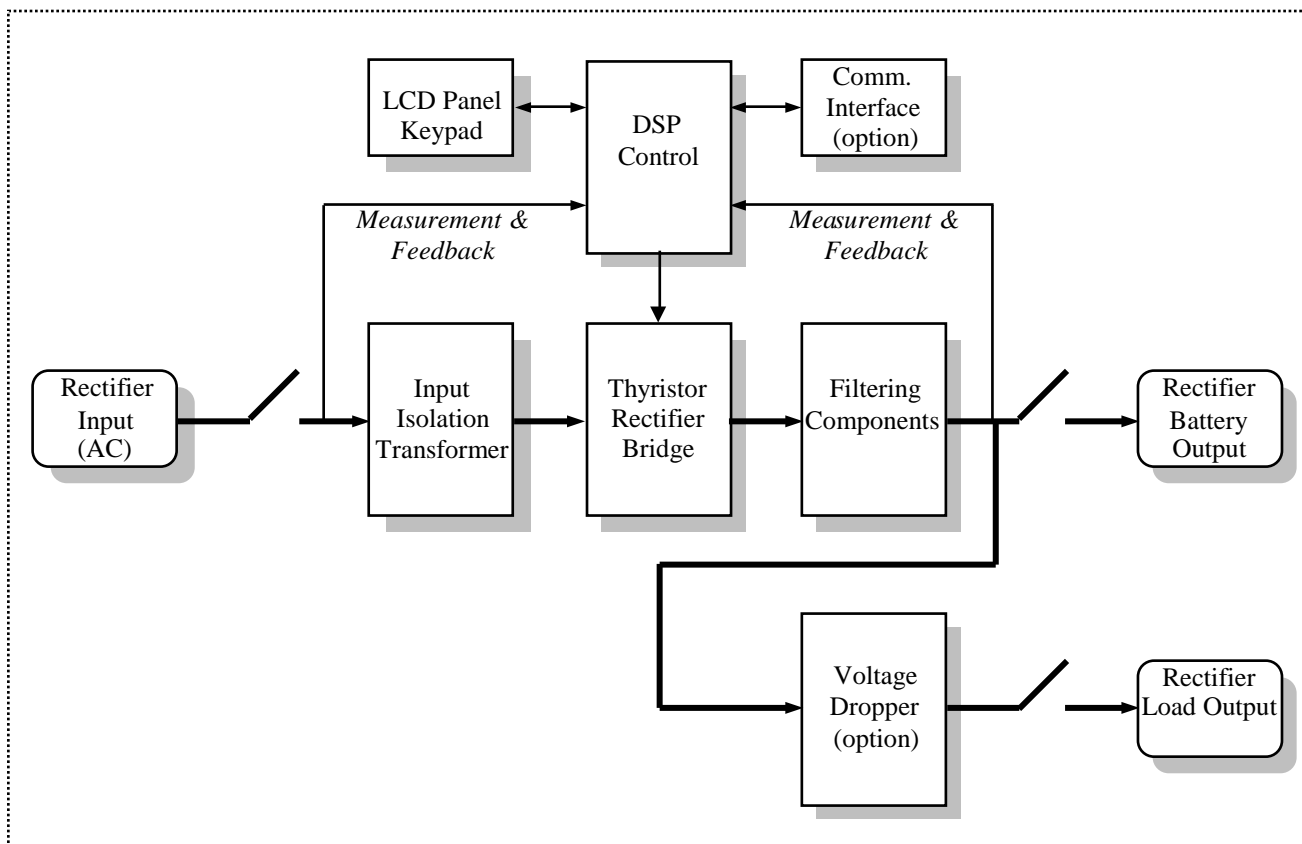
GENERAL SPECIFICATION

MODEL	XTM 3PH-125-E	/125A		/150A		/200A	
INPUT							
Nominal Voltage		Options: 3x208VAC / 3x380VAC / 3x400VAC / 3x415VAC / 3x440VAC / 3x480VAC (±15%)					
Nominal frequency		50Hz / 60Hz (±10%)					
Power Factor (Nominal)		0.80					
ITHD		<30-35% standard (<10% at 12 pulse Optional)					
Input Protection		Thermic Magnetic Overcurrent Protection, Overvoltage Protection					
OUTPUT							
Nominal Output Voltage		125V DC					
Output Voltage Adjustment		125V...150V DC (Optional to 162.5V DC for NiCd)					
Output Current Adjustment		10-100% of Nominal Output Current					
Float Charger Voltage Range		100%-120% of Nominal Output Voltage					
Boost Charger Voltage		100% to 120% (opt.130%) of Floating Output Voltage					
Boost Voltage (V/C)		2,40 Lead Acid Battery 1,50 NiCd Battery					
Float Voltage (V/C)		2,24 Lead Acid Battery 1,40 NiCd Battery					
Nominal Output Current		125 Amp		150 Amp		200 Amp	
Max Output Current		137 Amp		165 Amp		220 Amp	
Voltage Ripple / Regulation		< 1.5% / <1.0%					
GENERAL PROPERTIES							
Bost Timer		0-99.9 hours adjustable					
Cooling		Fan Forced Cooling(Standard), Natural Cooling(Optional)					
Isolation Voltage		1500 or 3000VAC input/chassis and output/chassis					
Efficiency at full load		<91%					
Protection level		IP21(Standard) to IP54(Optional)					
Cable Entry		Front Bottom (Option: Top or Rear or Side)					
Filtering		LC Filter					
Circuit Breakers		Thermic-magnetic circuit breakers for input (Standard); for Battery and Load (Optional)					
Reset Button		Used for re-operation in case of fallure of the system.					
ENVIRONMENTAL							
Acoustic Noise		45 - 65 dB (according to Power Rating)					
Storage Temperature		(-20 °C) – (+70 °C)					
Operating Temperature		(-5°C) - (+50°C)					
Relative Humidity		0 - 95% Non-condensing					
Max Altitude		1000m (-1% Power for every 100m after 1000m) Max. 4000m					
Color		RAL7035 (Standard), others (Optional)					
COMMUNICATION & PARALLELING							
Communication		ModBus RS232 (Standard), 4 Dry Contacts (Standard), RS485 (Optional), TCP IP (Optional)					
Paralleling		Parallel Redundant Kit (Optional)					
COMPATIBILITY							
Standards		IEC62040-1, IEC62040-2, DIN 41773					
NOTE: All specifications subject to change without notice. Consult AETES's Technical Support Department for special applications.All names used above are registered trademarks of their respective owners.							

OPTIONS

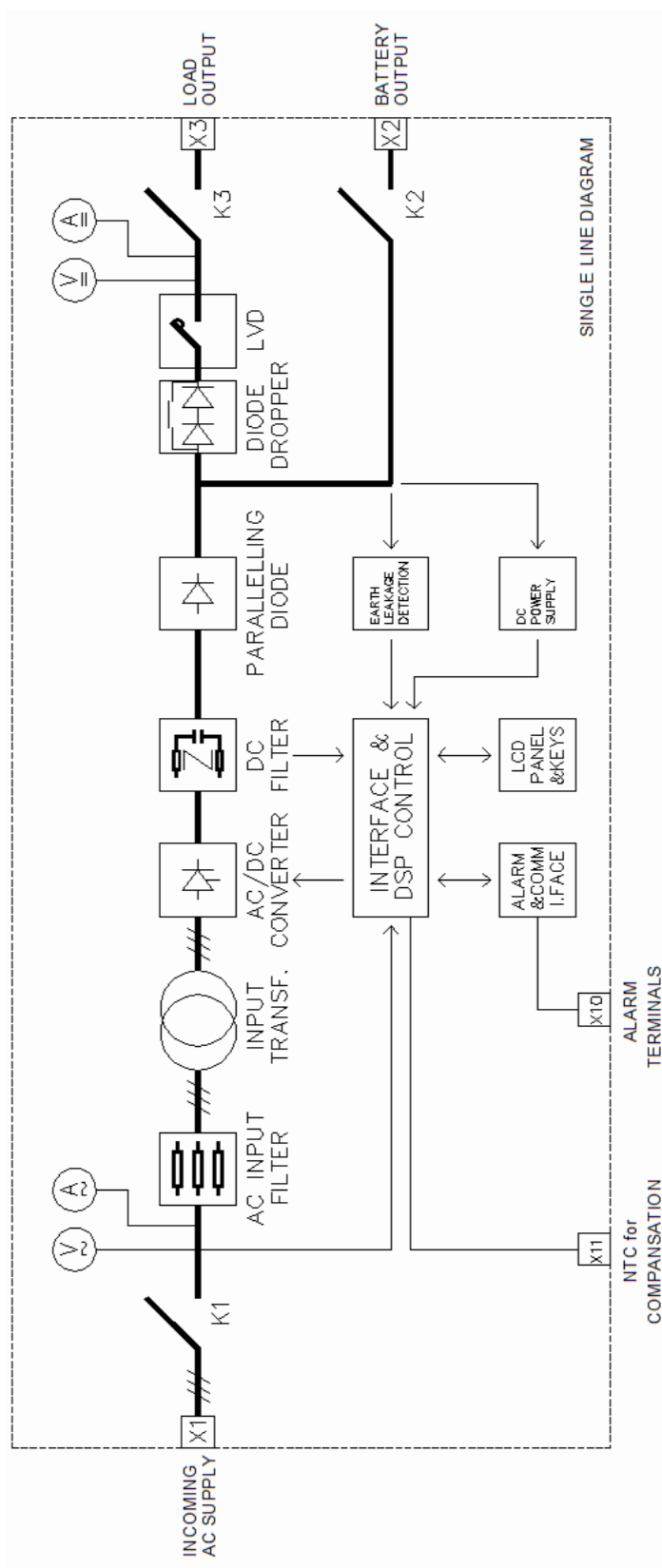
- 12 Pulse option to limit input current distortion
- Active parallel current sharing operation up to 4 devices
- Wide Screen HMI Touch Panel and Mimic Diagram
- Battery Temperature Compensation Module
- Analog Gauges (Input / Output / Battery Voltages and Currents)
- Transducers for Input / Output Voltage / Current (4-20mA and 0-10V)
- Load Output Voltage Dropper
- Input Power Factor / kVA / kW measurement
- Additional Dry Contact Relay Boards (Max. 3 pcs, 12 relays)
- Internal Cabinet Heater
- Additional Alarm and Communication Interface RS485/ TCP-IP

BLOCK DIAGRAM



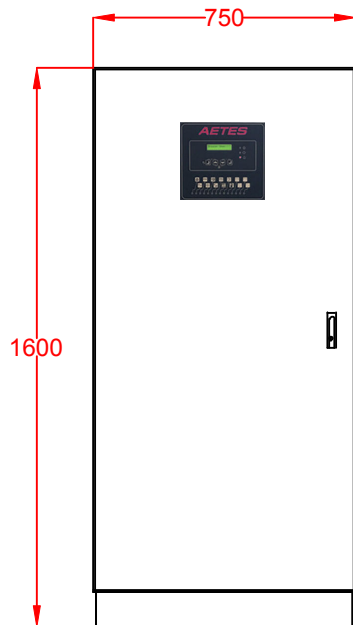
AETES 3PH Industrial Rectifier Charger Block Diagram

LINE DIAGRAM

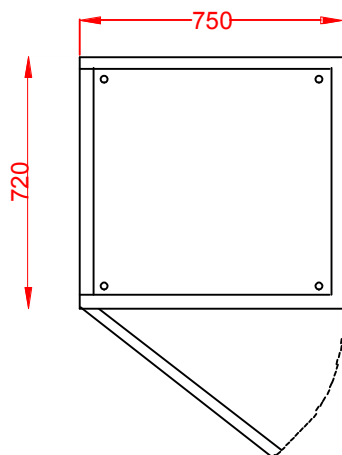
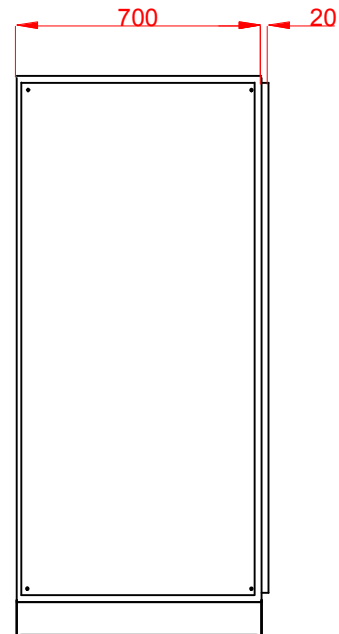


DRAWING

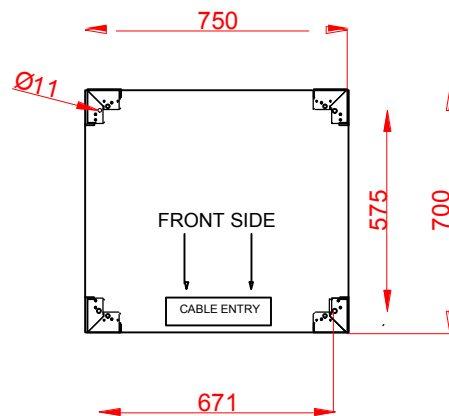
FRONT



LEFT



TOP



BOTTOM

"...power alliance..."



AETES
"...power alliance..."

The specifications, drawings and images indicated in this document are based on current information. All content is subject to modifications or additions. For more information on our local sales offices, visit us at our website below.